

CARTA DE LLEGADA NORMALIZADA-VUELO
POR INSTRUMENTOS - OACI
ICAO STANDARD INSTRUMENT ARRIVAL CHART
CAT: A/B/C/D

BOGOTA
ELDORADO
RNAV ARRIVALS RWY 13L/13R
31L/31R

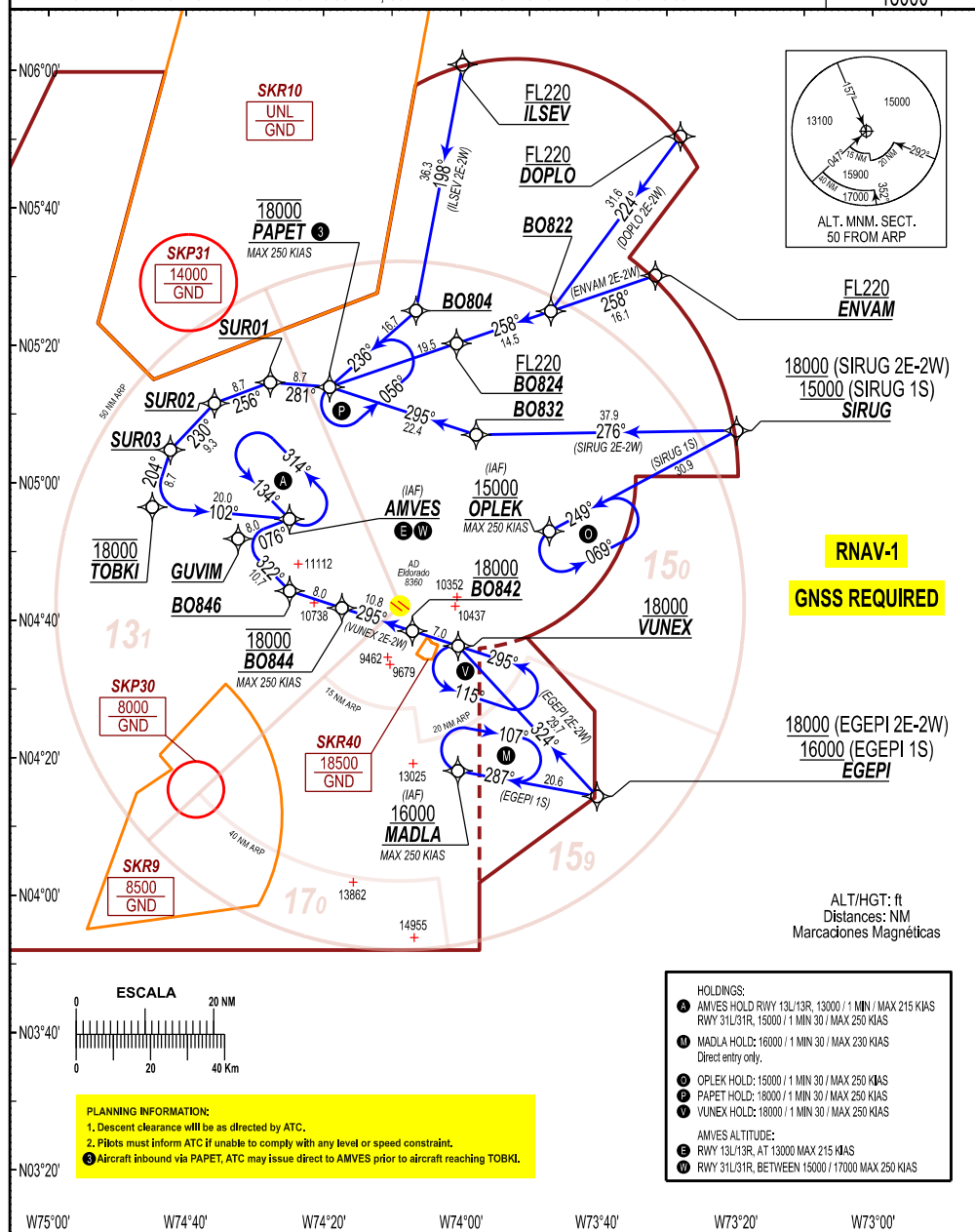
RWY 13L/13R: DOPL0 DOS ECHO [DOPL2E], EGEP1 DOS ECHO [EGEP2E], ENVM DOS ECHO [ENVA2E],
ILSEV DOS ECHO [ILSE2E], SIRUG DOS ECHO [SIRU2E], VUNEX DOS ECHO [VUNE2E].

RWY 31L/31R: EGEP1 UNO SIERRA [EGEP1S],
DOPL0 DOS WISKEY [DOPL2W], EGEP1 DOS WISKEY [EGEP2W], ENVM DOS WISKEY [ENVA2W],
ILSEV DOS WISKEY [ILSE2W], SIRUG UNO SIERRA [SIRU1S], SIRUG DOS WISKEY [SIRU2W], VUNEX DOS WISKEY [VUNE2W].

DECL/ARP/EDR
7° W/17
VAR: 0°8.3'W/Año

APP: Bogota North Term 121.3 MHz Alternate 120.3 MHz, Bogota South Term 119.65 MHz Alternate 120.65 MHz,
Bogota West Term 119.95 MHz Alternate 120.95 MHz. Arrivals 119.50 MHz, Alternate 119.05 MHz, ATIS: 127.8 MHz.
TWR: North ELDORADO 118.1 MHz Alternate 118.35 MHz, South EL DORADO 118.25 MHz Alternate 118.35 MHz.

ALTITUD DE
TRANSICION
18000'



BOGOTA / ELDORADO

SKBO / STAR1 RNAV RWY 31L / 31R

PATH TERM	WAYPOINT NAME	LATITUDE (NORTH) 0°/0'/0,00"	LONGITUDE (WEST) 0°/0'/0,00"	FB FO	ORIENTATION M° (T°)	DISTANCE BETWEEN POINTS (NM)	ALTITUDE / AT / - / B +	SPEED LIMIT (KTs)	TRANSITION IDENTIFIER	RUNWAY DIRECTION	NAV PERF
EGEPI 2W											
IF	EGEPI	04°14'22.0000"	073°40'06.0000"	FB	X	X	18000 +	X	RW31B	31L;31R	RNAV 1
TF	VUNEX	04°36'15.8430"	074°00'20.5680"	FB	324° (317.2°)	29.7	18000 +	X	RW31B	31L;31R	RNAV 1
TF	BO842	04°38'26.4480"	074°07'00.5280"	FB	295° (288.0°)	7.0	18000 +	X	RW31B	31L;31R	RNAV 1
TF	BO844	04°41'47.6850"	074°17'17.2450"	FB	295° (288.0°)	10.8	18000 AT	250	RW31B	31L;31R	RNAV 1
TF	BO846	04°44'16.7590"	074°24'54.4650"	FB	295° (288.0°)	8.0	X	X	RW31B	31L;31R	RNAV 1
TF	GUVIM	04°51'53.0950"	074°32'25.3750"	FB	322° (315.3°)	10.7	X	X	RW31B	31L;31R	RNAV 1
TF	AMVES	04°54'45.9900"	074°24'56.4530"	FB	076° (069.0°)	8.0	15000 / 17000 B	250	RW31B	31L;31R	RNAV 1
VUNEX 2W											
IF	VUNEX	04°36'15.8430"	074°00'20.5680"	FB	X	X	18000 +	X	RW31B	31L;31R	RNAV 1
TF	BO842	04°38'26.4480"	074°07'00.5280"	FB	295° (288.0°)	7.0	18000 +	X	RW31B	31L;31R	RNAV 1
TF	BO844	04°41'47.6850"	074°17'17.2450"	FB	295° (288.0°)	10.8	18000 AT	250	RW31B	31L;31R	RNAV 1
TF	BO846	04°44'16.7590"	074°24'54.4650"	FB	295° (288.0°)	8.0	X	X	RW31B	31L;31R	RNAV 1
TF	GUVIM	04°51'53.0950"	074°32'25.3750"	FB	322° (315.3°)	10.7	X	X	RW31B	31L;31R	RNAV 1
TF	AMVES	04°54'45.9900"	074°24'56.4530"	FB	076° (069.0°)	8.0	15000 / 17000 B	250	RW31B	31L;31R	RNAV 1
SIRUG 2W											
IF	SIRUG	05°07'39.0000"	073°19'45.0000"	FB	X	X	18000 +	X	RW31B	31L;31R	RNAV 1
TF	BO832	05°07'02.0180"	073°57'43.1440"	FB	276° (269.1°)	37.9	X	X	RW31B	31L;31R	RNAV 1
TF	PAPET	05°13'59.1020"	074°19'04.7810"	FB	295° (288.0°)	22.4	18000 AT	250	RW31B	31L;31R	RNAV 1
TF	SUR01	05°14'40.0770"	074°27'43.8570"	FB	281° (274.5°)	8.7	X	X	RW31B	31L;31R	RNAV 1
TF	SUR02	05°11'37.1920"	074°35'51.5180"	FB	256° (249.5°)	8.7	X	X	RW31B	31L;31R	RNAV 1
TF	SUR03	05°04'49.1770"	074°42'17.5960"	FB	230° (223.5°)	9.3	X	X	RW31B	31L;31R	RNAV 1
TF	TOBKI	04°56'30.7860"	074°44'54.1670"	FB	204° (197.5°)	8.7	18000 AT	X	RW31B	31L;31R	RNAV 1
TF	AMVES	04°54'45.9900"	074°24'56.4530"	FB	102° (095.0°)	20.0	15000 / 17000 B	250	RW31B	31L;31R	RNAV 1

BOGOTA / ELDORADO

SKBO / STAR1 RNAV RWY 31L / 31R

PATH TERM	WAYPOINT NAME	LATITUDE (NORTH) 0°/0'/0,00"	LONGITUDE (WEST) 0°/0'/0,00"	FB FO	ORIENTATION M° (T°)	DISTANCE BETWEEN POINTS (NM)	ALTITUDE + / AT / - / B	SPEED LIMIT (KTs)	TRANSITION IDENTIFIER	RUNWAY DIRECTION	NAV PERF
DOPLO 2W											
IF	DOPLO	05°50'30.0000"	073°27'57.0000"	FB	X	X	FL220 +	X	RW31B	31L;31R	RNAV 1
TF	BO822	05°25'01.7580"	073°46'49.5790"	FB	224° (216.6°)	31.6	X	X	RW31B	31L;31R	RNAV 1
TF	BO824	05°20'19.6290"	074°00'34.2460"	FB	258° (251.2°)	14.5	FL220 +	X	RW31B	31L;31R	RNAV 1
TF	PAPET	05°13'59.1020"	074°19'04.7810"	FB	258° (251.1°)	19.5	18000 AT	250	RW31B	31L;31R	RNAV 1
TF	SUR01	05°14'40.0770"	074°27'43.8570"	FB	281° (274.5°)	8.7	X	X	RW31B	31L;31R	RNAV 1
TF	SUR02	05°11'37.1920"	074°35'51.5180"	FB	256° (249.5°)	8.7	X	X	RW31B	31L;31R	RNAV 1
TF	SUR03	05°04'49.1770"	074°42'17.5960"	FB	230° (223.5°)	9.3	X	X	RW31B	31L;31R	RNAV 1
TF	TOBKI	04°56'30.7860"	074°44'54.1670"	FB	204° (197.5°)	8.7	18000 AT	X	RW31B	31L;31R	RNAV 1
TF	AMVES	04°54'45.9900"	074°24'56.4530"	FB	102° (095.0°)	20.0	15000 / 17000 B	250	RW31B	31L;31R	RNAV 1
EGEPI 1S											
IF	EGEPI	04°14'22.0000"	073°40'06.0000"	FB	X	X	16000 +	X	RW31B	31L;31R	RNAV 1
TF	MADLA	04°18'03.3390"	074°00'23.2390"	FB	287° (280.3°)	20.6	16000 +	250	RW31B	31L;31R	RNAV 1
ENVAM 2W											
IF	ENVAM	05°30'13.9900"	073°31'35.6040"	FB	X	X	FL220 +	X	RW31B	31L;31R	RNAV 1
TF	BO822	05°25'01.7580"	073°46'49.5790"	FB	258° (251.2°)	16.1	X	X	RW31B	31L;31R	RNAV 1
TF	BO824	05°20'19.6290"	074°00'34.2460"	FB	258° (251.2°)	14.5	FL220 +	X	RW31B	31L;31R	RNAV 1
TF	PAPET	05°13'59.1020"	074°19'04.7810"	FB	258° (251.1°)	19.5	18000 AT	250	RW31B	31L;31R	RNAV 1
TF	SUR01	05°14'40.0770"	074°27'43.8570"	FB	281° (274.5°)	8.7	X	X	RW31B	31L;31R	RNAV 1
TF	SUR02	05°11'37.1920"	074°35'51.5180"	FB	256° (249.5°)	8.7	X	X	RW31B	31L;31R	RNAV 1
TF	SUR03	05°04'49.1770"	074°42'17.5960"	FB	230° (223.5°)	9.3	X	X	RW31B	31L;31R	RNAV 1
TF	TOBKI	04°56'30.7860"	074°44'54.1670"	FB	204° (197.5°)	8.7	18000 AT	X	RW31B	31L;31R	RNAV 1
TF	AMVES	04°54'45.9900"	074°24'56.4530"	FB	102° (095.0°)	20.0	15000 / 17000 B	250	RW31B	31L;31R	RNAV 1
ILSEV 2W											
IF	ILSEV	06°00'57.0000"	073°59'42.0000"	FB	X	X	FL220 +	X	RW31B	31L;31R	RNAV 1
TF	BO804	05°25'06.0000"	074°06'30.0000"	FB	198° (190.8°)	36.3	X	X	RW31B	31L;31R	RNAV 1
TF	PAPET	05°13'59.1020"	074°19'04.7810"	FB	236° (228.6°)	16.7	18000 AT	250	RW31B	31L;31R	RNAV 1
TF	SUR01	05°14'40.0770"	074°27'43.8570"	FB	281° (274.5°)	8.7	X	X	RW31B	31L;31R	RNAV 1
TF	SUR02	05°11'37.1920"	074°35'51.5180"	FB	256° (249.5°)	8.7	X	X	RW31B	31L;31R	RNAV 1
TF	SUR03	05°04'49.1770"	074°42'17.5960"	FB	230° (223.5°)	9.3	X	X	RW31B	31L;31R	RNAV 1
TF	TOBKI	04°56'30.7860"	074°44'54.1670"	FB	204° (197.5°)	8.7	18000 AT	X	RW31B	31L;31R	RNAV 1
TF	AMVES	04°54'45.9900"	074°24'56.4530"	FB	102° (095.0°)	20.0	15000 / 17000 B	250	RW31B	31L;31R	RNAV 1
SIRUG 1S											
IF	SIRUG	05°07'39.0000"	073°19'45.0000"	FB	X	X	15000 +	X	RW31B	31L;31R	RNAV 1
TF	OPEK	04°52'58.1320"	073°47'02.8700"	FB	249° (241.8°)	30.9	15000 +	250	RW31B	31L;31R	RNAV 1

BOGOTA / ELDORADO

SKBO / STAR1 RNAV RWY 13L / 13R

PATH TERM	WAYPOINT NAME	LATITUDE (NORTH) 0°/0°/0,00"	LONGITUDE (WEST) 0°/0°/0,00"	FB FO	ORIENTATION M° (T°)	DISTANCE BETWEEN POINTS (NM)	ALTITUDE + / AT / - / B	SPEED LIMIT (KTS)	TRANSITION IDENTIFIER	RUNWAY DIRECTION	NAV PERF
DOPLO 2E											
IF	DOPLO	05°50'30.0000"	073°27'57.0000"	FB	X	X	FL220 +	X	RW13B	13L;13R	RNAV 1
TF	BO822	05°25'01.7580"	073°46'49.5790"	FB	224° (216.6°)	31.6	X	X	RW13B	13L;13R	RNAV 1
TF	BO824	05°20'19.6290"	074°00'34.2460"	FB	258° (251.2°)	14.5	FL220 +	X	RW13B	13L;13R	RNAV 1
TF	PAPET	05°13'59.1020"	074°19'04.7810"	FB	258° (251.1°)	19.5	18000 AT	250	RW13B	13L;13R	RNAV 1
TF	SUR01	05°14'40.0770"	074°27'43.8570"	FB	281° (274.5°)	8.7	X	X	RW13B	13L;13R	RNAV 1
TF	SUR02	05°11'37.1920"	074°35'51.5180"	FB	256° (249.5°)	8.7	X	X	RW13B	13L;13R	RNAV 1
TF	SUR03	05°04'49.1770"	074°42'17.5960"	FB	230° (223.5°)	9.3	X	X	RW13B	13L;13R	RNAV 1
TF	TOBKI	04°56'30.7860"	074°44'54.1670"	FB	204° (197.5°)	8.7	18000 AT	X	RW13B	13L;13R	RNAV 1
TF	AMVES	04°54'45.9900"	074°24'56.4530"	FB	102° (095.0°)	20.0	13000 AT	215	RW13B	13L;13R	RNAV 1
EGEPI 2E											
IF	EGEPI	04°14'22.0000"	073°40'06.0000"	FB	X	X	18000 +	X	RW13B	13L;13R	RNAV 1
TF	VUNEX	04°36'15.8430"	074°00'20.5680"	FB	324° (317.2°)	29.7	18000 +	X	RW13B	13L;13R	RNAV 1
TF	BO842	04°38'26.4480"	074°07'00.5280"	FB	295° (288.0°)	7.0	18000 +	X	RW13B	13L;13R	RNAV 1
TF	BO844	04°41'47.6850"	074°17'17.2450"	FB	295° (288.0°)	10.8	18000 AT	250	RW13B	13L;13R	RNAV 1
TF	BO846	04°44'16.7590"	074°24'54.4650"	FB	295° (288.0°)	8.0	X	X	RW13B	13L;13R	RNAV 1
TF	GUVIM	04°51'53.0950"	074°32'25.3750"	FB	322° (315.3°)	10.7	X	X	RW13B	13L;13R	RNAV 1
TF	AMVES	04°54'45.9900"	074°24'56.4530"	FB	076° (069.0°)	8.0	13000 AT	215	RW13B	13L;13R	RNAV 1
VUNEX 2E											
IF	VUNEX	04°36'15.8430"	074°00'20.5680"	FB	X	X	18000 +	X	RW13B	13L;13R	RNAV 1
TF	BO842	04°38'26.4480"	074°07'00.5280"	FB	295° (288.0°)	7.0	18000 +	X	RW13B	13L;13R	RNAV 1
TF	BO844	04°41'47.6850"	074°17'17.2450"	FB	295° (288.0°)	10.8	18000 AT	250	RW13B	13L;13R	RNAV 1
TF	BO846	04°44'16.7590"	074°24'54.4650"	FB	295° (288.0°)	8.0	X	X	RW13B	13L;13R	RNAV 1
TF	GUVIM	04°51'53.0950"	074°32'25.3750"	FB	322° (315.3°)	10.7	X	X	RW13B	13L;13R	RNAV 1
TF	AMVES	04°54'45.9900"	074°24'56.4530"	FB	076° (069.0°)	8.0	13000 AT	215	RW13B	13L;13R	RNAV 1
ENVAM 2E											
IF	ENVAM	05°30'13.9900"	073°31'35.6040"	FB	X	X	FL220 +	X	RW13B	13L;13R	RNAV 1
TF	BO822	05°25'01.7580"	073°46'49.5790"	FB	258° (251.2°)	16.1	X	X	RW13B	13L;13R	RNAV 1
TF	BO824	05°20'19.6290"	074°00'34.2460"	FB	258° (251.2°)	14.5	FL220 +	X	RW13B	13L;13R	RNAV 1
TF	PAPET	05°13'59.1020"	074°19'04.7810"	FB	258° (251.1°)	19.5	18000 AT	250	RW13B	13L;13R	RNAV 1
TF	SUR01	05°14'40.0770"	074°27'43.8570"	FB	281° (274.5°)	8.7	X	X	RW13B	13L;13R	RNAV 1
TF	SUR02	05°11'37.1920"	074°35'51.5180"	FB	256° (249.5°)	8.7	X	X	RW13B	13L;13R	RNAV 1
TF	SUR03	05°04'49.1770"	074°42'17.5960"	FB	230° (223.5°)	9.3	X	X	RW13B	13L;13R	RNAV 1
TF	TOBKI	04°56'30.7860"	074°44'54.1670"	FB	204° (197.5°)	8.7	18000 AT	X	RW13B	13L;13R	RNAV 1
TF	AMVES	04°54'45.9900"	074°24'56.4530"	FB	102° (095.0°)	20.0	13000 AT	215	RW13B	13L;13R	RNAV 1
ILSEV 2E											
IF	ILSEV	06°00'57.0000"	073°59'42.0000"	FB	X	X	FL220 +	X	RW13B	13L;13R	RNAV 1
TF	BO804	05°25'06.0000"	074°06'30.0000"	FB	198° (190.8°)	36.3	X	X	RW13B	13L;13R	RNAV 1
TF	PAPET	05°13'59.1020"	074°19'04.7810"	FB	236° (228.6°)	16.7	18000 AT	250	RW13B	13L;13R	RNAV 1
TF	SUR01	05°14'40.0770"	074°27'43.8570"	FB	281° (274.5°)	8.7	X	X	RW13B	13L;13R	RNAV 1
TF	SUR02	05°11'37.1920"	074°35'51.5180"	FB	256° (249.5°)	8.7	X	X	RW13B	13L;13R	RNAV 1
TF	SUR03	05°04'49.1770"	074°42'17.5960"	FB	230° (223.5°)	9.3	X	X	RW13B	13L;13R	RNAV 1
TF	TOBKI	04°56'30.7860"	074°44'54.1670"	FB	204° (197.5°)	8.7	18000 AT	X	RW13B	13L;13R	RNAV 1
TF	AMVES	04°54'45.9900"	074°24'56.4530"	FB	102° (095.0°)	20.0	13000 AT	215	RW13B	13L;13R	RNAV 1
SIRUG 2E											
IF	SIRUG	05°07'39.0000"	073°19'45.0000"	FB	X	X	18000 +	X	RW13B	13L;13R	RNAV 1
TF	BO832	05°07'02.0180"	073°57'43.1440"	FB	276° (269.1°)	37.9	X	X	RW13B	13L;13R	RNAV 1
TF	PAPET	05°13'59.1020"	074°19'04.7810"	FB	295° (288.0°)	22.4	18000 AT	250	RW13B	13L;13R	RNAV 1
TF	SUR01	05°14'40.0770"	074°27'43.8570"	FB	281° (274.5°)	8.7	X	X	RW13B	13L;13R	RNAV 1
TF	SUR02	05°11'37.1920"	074°35'51.5180"	FB	256° (249.5°)	8.7	X	X	RW13B	13L;13R	RNAV 1
TF	SUR03	05°04'49.1770"	074°42'17.5960"	FB	230° (223.5°)	9.3	X	X	RW13B	13L;13R	RNAV 1
TF	TOBKI	04°56'30.7860"	074°44'54.1670"	FB	204° (197.5°)	8.7	18000 AT	X	RW13B	13L;13R	RNAV 1
TF	AMVES	04°54'45.9900"	074°24'56.4530"	FB	102° (095.0°)	20.0	13000 AT	215	RW13B	13L;13R	RNAV 1

STAR RNAV

CARTA DE LLEGADA NORMALIZADA-VUELO
POR INSTRUMENTOS - OACI
ICAO STANDARD INSTRUMENT ARRIVAL CHART
CAT: A/B/C/D

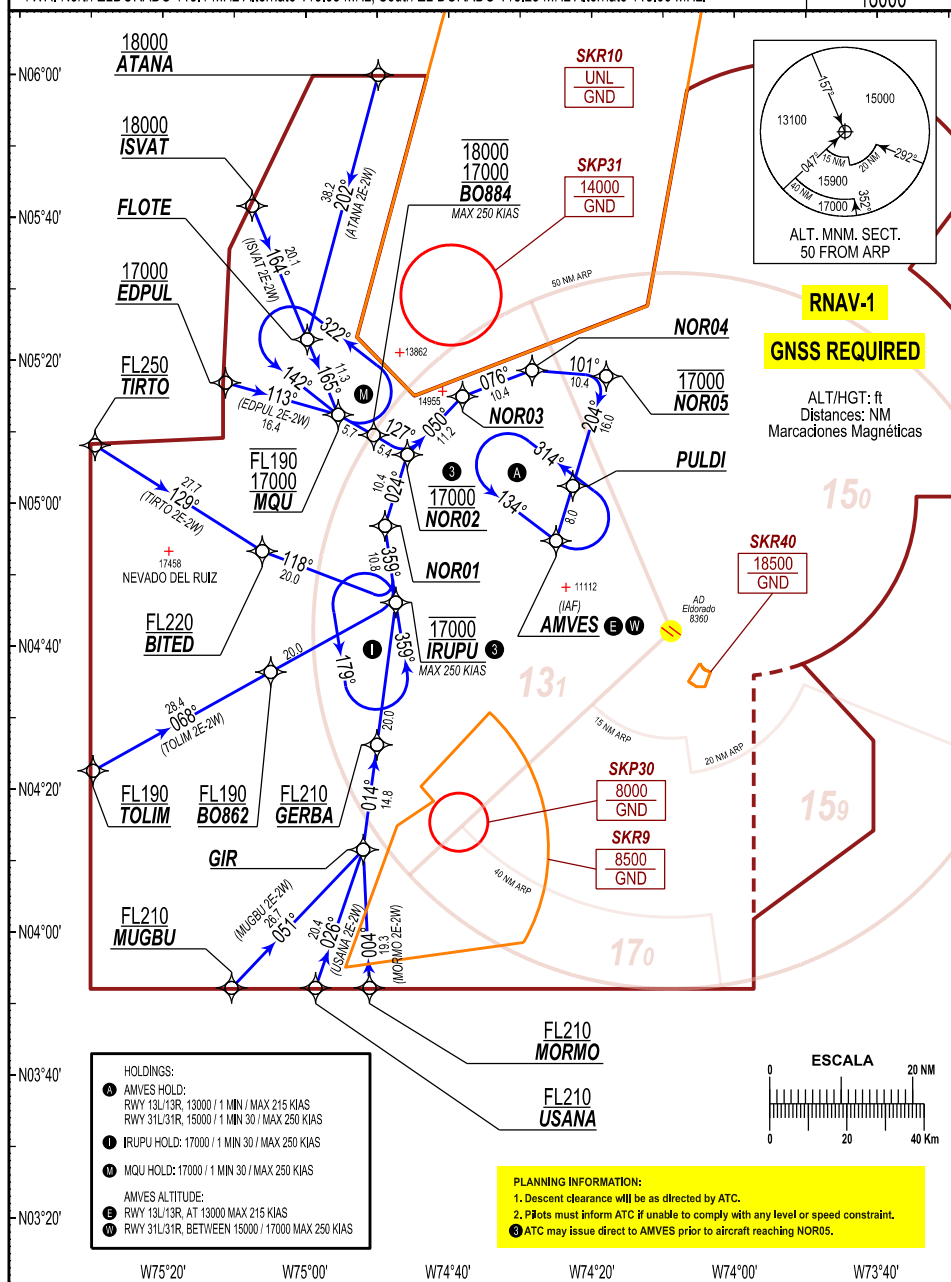
BOGOTA
ELDORADO
RNAV ARRIVALS RWY 13L/13R
31L/31R

RWY 13L/13R: ATANA DOS ECHO [ATAN2E], EDPUL DOS ECHO [EDPU2E], ISVAT DOS ECHO [ISVA2E], MORMO DOS ECHO [MORM2E],
MUGBU DOS ECHO [MUGB2E], TIRTO DOS ECHO [TIRT2E], TOLIM DOS ECHO [TOL2E], USANA DOS ECHO [USAN2E].
RWY 31L/31R: ATANA DOS WISKEY [ATAN2W], EDPUL DOS WISKEY [EDPU2W], ISVAT DOS WISKEY [ISVA2W], MORMO DOS WISKEY [MORM2W],
MUGBU DOS WISKEY [MUGB2W], TIRTO DOS WISKEY [TIRT2W], TOLIM DOS WISKEY [TOL2W], USANA DOS WISKEY [USAN2W].

DECL/ARP/EDR
7° W/17
VAR: 0°8.3'W/Año

APP: Bogota North Term 121.3 MHz Alternate 120.3 MHz, Bogota South Term 119.65 MHz Alternate 120.65 MHz,
Bogota West Term 119.95 MHz Alternate 120.95 MHz, Arrivals 119.50 MHz, Alternate 119.05 MHz, ATIS: 127.8 MHz.
TWR: North ELDORADO 118.1 MHz Alternate 118.35 MHz, South EL DORADO 118.25 MHz Alternate 118.35 MHz.

ALTITUD DE
TRANSICION
18000'



BOGOTA / ELDORADO
SKBO / STAR2 RNAV RWY 13L / 13R

PATH TERM	WAYPOINT NAME	LATITUDE (NORTH) 0°10'0.00"	LONGITUDE (WEST) 0°10'0.00"	FB FO	ORIENTATION M° (T°)	DISTANCE BETWEEN POINTS (NM)	ALTITUDE + / AT / - / B	SPEED LIMIT (KTS)	TRANSITION IDENTIFIER	RUNWAY DIRECTION	NAV PERF
ATANA 2E											
IF	ATANA	06°00'02.0000"	074°49'50.0000"	FB	X	X	18000 +	X	RW13B	13L:13R	RNAV 1
TF	FLOTE	05°22'58.4750"	074°59'47.4110"	FB	202° (195.1°)	38.2	X	X	RW13B	13L:13R	RNAV 1
TF	MOU	05°12'26.0000"	074°55'27.0000"	FB	165° (157.6°)	11.3	17000/FL190 B	X	RW13B	13L:13R	RNAV 1
TF	BO884	05°09'34.6060"	074°50'28.8690"	FB	127° (119.8°)	5.7	17000/18000 B	250	RW13B	13L:13R	RNAV 1
TF	NOR02	05°06'49.7590"	074°45'45.8880"	FB	127° (120.2°)	5.4	17000 AT	X	RW13B	13L:13R	RNAV 1
TF	NOR03	05°14'59.4090"	074°38'02.5990"	FB	050° (043.5°)	11.2	X	X	RW13B	13L:13R	RNAV 1
TF	NOR04	05°18'38.8910"	074°28'17.3580"	FB	076° (069.5°)	10.4	X	X	RW13B	13L:13R	RNAV 1
TF	NOR05	05°17'49.7170"	074°17'54.4050"	FB	101° (094.5°)	10.4	17000 AT	X	RW13B	13L:13R	RNAV 1
TF	PULDI	05°02'27.2430"	074°22'35.8260"	FB	204° (197.0°)	16.0	X	X	RW13B	13L:13R	RNAV 1
TF	AMVES	04°54'45.9900"	074°24'56.4530"	FB	204° (197.0°)	8.0	13000 AT	215	RW13B	13L:13R	RNAV 1
EDPUL 2E											
IF	EDPUL	05°16'55.0000"	075°11'14.0000"	FB	X	X	17000 +	X	RW13B	13L:13R	RNAV 1
TF	MOU	05°12'26.0000"	074°55'27.0000"	FB	113° (105.8°)	16.4	17000/FL190 B	X	RW13B	13L:13R	RNAV 1
TF	BO884	05°09'34.6060"	074°50'28.8690"	FB	127° (119.8°)	5.7	17000/18000 B	250	RW13B	13L:13R	RNAV 1
TF	NOR02	05°06'49.7590"	074°45'45.8880"	FB	127° (120.2°)	5.4	17000 AT	X	RW13B	13L:13R	RNAV 1
TF	NOR03	05°14'59.4090"	074°38'02.5990"	FB	050° (043.5°)	11.2	X	X	RW13B	13L:13R	RNAV 1
TF	NOR04	05°18'38.8910"	074°28'17.3580"	FB	076° (069.5°)	10.4	X	X	RW13B	13L:13R	RNAV 1
TF	NOR05	05°17'49.7170"	074°17'54.4050"	FB	101° (094.5°)	10.4	17000 AT	X	RW13B	13L:13R	RNAV 1
TF	PULDI	05°02'27.2430"	074°22'35.8260"	FB	204° (197.0°)	16.0	X	X	RW13B	13L:13R	RNAV 1
TF	AMVES	04°54'45.9900"	074°24'56.4530"	FB	204° (197.0°)	8.0	13000 AT	215	RW13B	13L:13R	RNAV 1
ISVAT 2E											
IF	ISVAT	05°41'41.0000"	075°07'30.0000"	FB	X	X	18000 +	X	RW13B	13L:13R	RNAV 1
TF	FLOTE	05°22'58.4750"	074°59'47.4110"	FB	164° (157.6°)	20.1	X	X	RW13B	13L:13R	RNAV 1
TF	MOU	05°12'26.0000"	074°55'27.0000"	FB	165° (157.6°)	11.3	17000/FL190 B	X	RW13B	13L:13R	RNAV 1
TF	BO884	05°09'34.6060"	074°50'28.8690"	FB	127° (119.8°)	5.7	17000/18000 B	250	RW13B	13L:13R	RNAV 1
TF	NOR02	05°06'49.7590"	074°45'45.8880"	FB	127° (120.2°)	5.4	17000 AT	X	RW13B	13L:13R	RNAV 1
TF	NOR03	05°14'59.4090"	074°38'02.5990"	FB	050° (043.5°)	11.2	X	X	RW13B	13L:13R	RNAV 1
TF	NOR04	05°18'38.8910"	074°28'17.3580"	FB	076° (069.5°)	10.4	X	X	RW13B	13L:13R	RNAV 1
TF	NOR05	05°17'49.7170"	074°17'54.4050"	FB	101° (094.5°)	10.4	17000 AT	X	RW13B	13L:13R	RNAV 1
TF	PULDI	05°02'27.2430"	074°22'35.8260"	FB	204° (197.0°)	16.0	X	X	RW13B	13L:13R	RNAV 1
TF	AMVES	04°54'45.9900"	074°24'56.4530"	FB	204° (197.0°)	8.0	13000 AT	215	RW13B	13L:13R	RNAV 1
MORMO 2E											
IF	MORMO	03°52'08.0000"	074°51'04.0000"	FB	X	X	FL210 +	X	RW13B	13L:13R	RNAV 1
TF	GIR	04°11'30.0000"	074°51'57.0000"	FB	004° (357.4°)	19.3	X	X	RW13B	13L:13R	RNAV 1
TF	GERBA	04°26'11.6440"	074°50'00.7610"	FB	014° (007.5°)	14.8	FL210 +	X	RW13B	13L:13R	RNAV 1
TF	IRUPU	04°46'07.0560"	074°47'23.0280"	FB	014° (007.5°)	20.0	17000 AT	250	RW13B	13L:13R	RNAV 1
TF	NOR01	04°56'51.6730"	074°48'53.7220"	FB	359° (352.0°)	10.8	X	X	RW13B	13L:13R	RNAV 1
TF	NOR02	05°06'49.7590"	074°45'45.8880"	FB	024° (017.5°)	10.4	17000 AT	X	RW13B	13L:13R	RNAV 1
TF	NOR03	05°14'59.4090"	074°38'02.5990"	FB	050° (043.5°)	11.2	X	X	RW13B	13L:13R	RNAV 1
TF	NOR04	05°18'38.8910"	074°28'17.3580"	FB	076° (069.5°)	10.4	X	X	RW13B	13L:13R	RNAV 1
TF	NOR05	05°17'49.7170"	074°17'54.4050"	FB	101° (094.5°)	10.4	17000 AT	X	RW13B	13L:13R	RNAV 1
TF	PULDI	05°02'27.2430"	074°22'35.8260"	FB	204° (197.0°)	16.0	X	X	RW13B	13L:13R	RNAV 1
TF	AMVES	04°54'45.9900"	074°24'56.4530"	FB	204° (197.0°)	8.0	13000 AT	215	RW13B	13L:13R	RNAV 1

**BOGOTA / ELDORADO
SKBO / STAR2 RNAV RWY 13L / 13R**

PATH TERM	WAYPOINT NAME	LATITUDE (NORTH) 0°0'0.00"	LONGITUDE (WEST) 0°0'0.00"	FB FO	ORIENTATION M° (T°)	DISTANCE BETWEEN POINTS (NM)	ALTITUDE / AT / - / B	SPEED LIMIT (Kts) +	TRANSITION IDENTIFIER	RUNWAY DIRECTION	NAV PERF
MUGBU 2E											
IF	MUGBU	03°52'08.0000"	075°10'24.0000"	FB	X	X	FL210 +	X	RW13B	13L,13R	RNAV 1
TF	GIR	04°11'30.0000"	074°51'57.0000"	FB	051° (043.7°)	26.7	X	X	RW13B	13L,13R	RNAV 1
TF	GERBA	04°26'11.6440"	074°50'00.7610"	FB	014° (007.5°)	14.8	FL210 +	X	RW13B	13L,13R	RNAV 1
TF	IRUPU	04°46'07.0560"	074°47'23.0280"	FB	014° (007.5°)	20.0	17000 AT	250	RW13B	13L,13R	RNAV 1
TF	NOR01	04°56'51.6730"	074°48'53.7220"	FB	359° (352.0°)	10.8	X	X	RW13B	13L,13R	RNAV 1
TF	NOR02	05°06'49.7590"	074°45'45.8880"	FB	024° (017.5°)	10.4	X	X	RW13B	13L,13R	RNAV 1
TF	NOR03	05°14'59.4090"	074°38'02.5990"	FB	050° (043.5°)	11.2	X	X	RW13B	13L,13R	RNAV 1
TF	NOR04	05°18'38.8910"	074°28'17.3580"	FB	076° (069.5°)	10.4	X	X	RW13B	13L,13R	RNAV 1
TF	NOR05	05°17'49.7170"	074°17'54.4050"	FB	101° (094.5°)	10.4	17000 AT	X	RW13B	13L,13R	RNAV 1
TF	PULDI	05°02'27.2430"	074°22'35.8260"	FB	204° (197.0°)	16.0	X	X	RW13B	13L,13R	RNAV 1
TF	AMVES	04°54'45.9900"	074°24'56.4530"	FB	204° (197.0°)	8.0	13000 AT	215	RW13B	13L,13R	RNAV 1
TIRTO 2E											
IF	TIRTO	05°08'09.0000"	075°29'31.0000"	FB	X	X	FL250 +	X	RW13B	13L,13R	RNAV 1
TF	BITED	04°53'18.9320"	075°06'05.3720"	FB	129° (122.3°)	27.7	FL220 +	X	RW13B	13L,13R	RNAV 1
TF	IRUPU	04°46'07.0560"	074°47'23.0280"	FB	118° (111.0°)	20.0	17000 AT	250	RW13B	13L,13R	RNAV 1
TF	NOR01	04°56'51.6730"	074°48'53.7220"	FB	359° (352.0°)	10.8	X	X	RW13B	13L,13R	RNAV 1
TF	NOR02	05°06'49.7590"	074°45'45.8880"	FB	024° (017.5°)	10.4	X	X	RW13B	13L,13R	RNAV 1
TF	NOR03	05°14'59.4090"	074°38'02.5990"	FB	050° (043.5°)	11.2	X	X	RW13B	13L,13R	RNAV 1
TF	NOR04	05°18'38.8910"	074°28'17.3580"	FB	076° (069.5°)	10.4	X	X	RW13B	13L,13R	RNAV 1
TF	NOR05	05°17'49.7170"	074°17'54.4050"	FB	101° (094.5°)	10.4	17000 AT	X	RW13B	13L,13R	RNAV 1
TF	PULDI	05°02'27.2430"	074°22'35.8260"	FB	204° (197.0°)	16.0	X	X	RW13B	13L,13R	RNAV 1
TF	AMVES	04°54'45.9900"	074°24'56.4530"	FB	204° (197.0°)	8.0	13000 AT	215	RW13B	13L,13R	RNAV 1
TOLIM 2E											
IF	TOLIM	04°22'33.0000"	075°29'48.0000"	FB	X	X	FL190 +	X	RW13B	13L,13R	RNAV 1
TF	BO862	04°36'23.2530"	075°04'54.6260"	FB	068° (061.0°)	28.4	FL190 +	X	RW13B	13L,13R	RNAV 1
TF	IRUPU	04°46'07.0560"	074°47'23.0280"	FB	068° (061.0°)	20.0	17000 AT	250	RW13B	13L,13R	RNAV 1
TF	NOR01	04°56'51.6730"	074°48'53.7220"	FB	359° (352.0°)	10.8	X	X	RW13B	13L,13R	RNAV 1
TF	NOR02	05°06'49.7590"	074°45'45.8880"	FB	024° (017.5°)	10.4	X	X	RW13B	13L,13R	RNAV 1
TF	NOR03	05°14'59.4090"	074°38'02.5990"	FB	050° (043.5°)	11.2	X	X	RW13B	13L,13R	RNAV 1
TF	NOR04	05°18'38.8910"	074°28'17.3580"	FB	076° (069.5°)	10.4	X	X	RW13B	13L,13R	RNAV 1
TF	NOR05	05°17'49.7170"	074°17'54.4050"	FB	101° (094.5°)	10.4	17000 AT	X	RW13B	13L,13R	RNAV 1
TF	PULDI	05°02'27.2430"	074°22'35.8260"	FB	204° (197.0°)	16.0	X	X	RW13B	13L,13R	RNAV 1
TF	AMVES	04°54'45.9900"	074°24'56.4530"	FB	204° (197.0°)	8.0	13000 AT	215	RW13B	13L,13R	RNAV 1
USANA 2E											
IF	USANA	03°52'08.0000"	074°58'38.0000"	FB	X	X	FL210 +	X	RW13B	13L,13R	RNAV 1
TF	GIR	04°11'30.0000"	074°51'57.0000"	FB	026° (019.1°)	20.4	X	X	RW13B	13L,13R	RNAV 1
TF	GERBA	04°26'11.6440"	074°50'00.7610"	FB	014° (007.5°)	14.8	FL210 +	X	RW13B	13L,13R	RNAV 1
TF	IRUPU	04°46'07.0560"	074°47'23.0280"	FB	014° (007.5°)	20.0	17000 AT	250	RW13B	13L,13R	RNAV 1
TF	NOR01	04°56'51.6730"	074°48'53.7220"	FB	359° (352.0°)	10.8	X	X	RW13B	13L,13R	RNAV 1
TF	NOR02	05°06'49.7590"	074°45'45.8880"	FB	024° (017.5°)	10.4	X	X	RW13B	13L,13R	RNAV 1
TF	NOR03	05°14'59.4090"	074°38'02.5990"	FB	050° (043.5°)	11.2	X	X	RW13B	13L,13R	RNAV 1
TF	NOR04	05°18'38.8910"	074°28'17.3580"	FB	076° (069.5°)	10.4	X	X	RW13B	13L,13R	RNAV 1
TF	NOR05	05°17'49.7170"	074°17'54.4050"	FB	101° (094.5°)	10.4	17000 AT	X	RW13B	13L,13R	RNAV 1
TF	PULDI	05°02'27.2430"	074°22'35.8260"	FB	204° (197.0°)	16.0	X	X	RW13B	13L,13R	RNAV 1
TF	AMVES	04°54'45.9900"	074°24'56.4530"	FB	204° (197.0°)	8.0	13000 AT	215	RW13B	13L,13R	RNAV 1

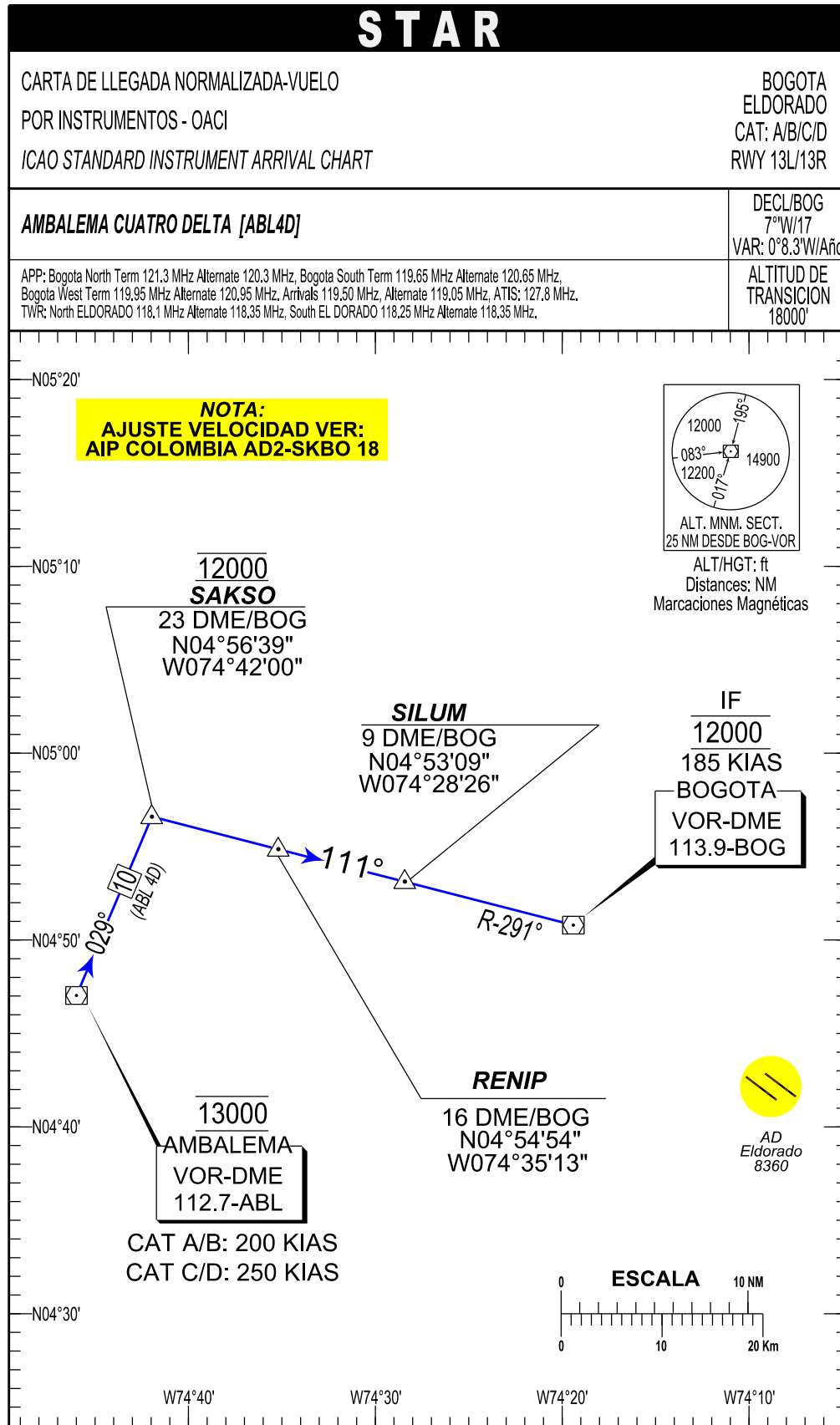
BOGOTA / ELDORADO
SKBO / STAR2 RNAV RWY 31L / 31R

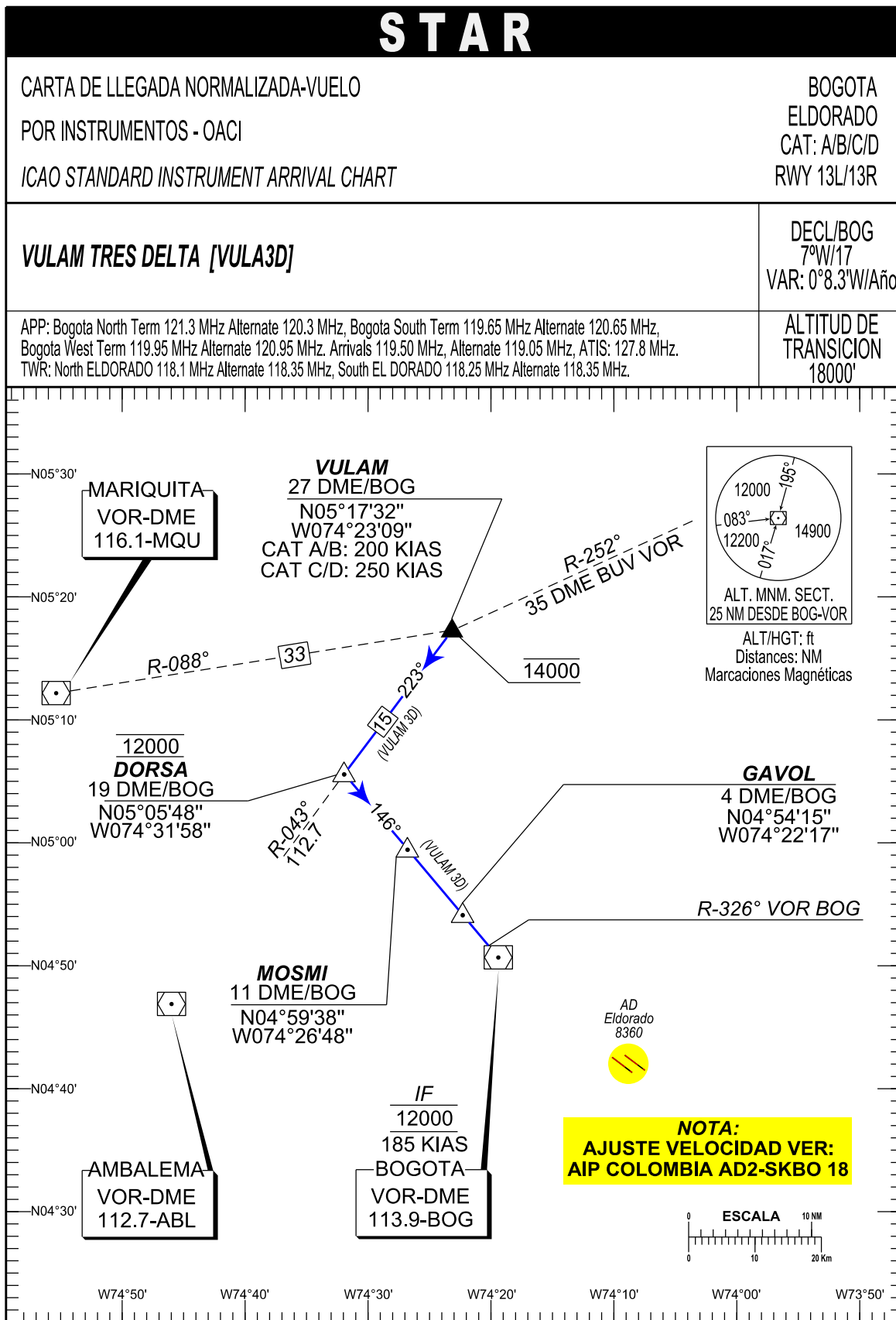
PATH	TERM	WAYPOINT NAME	LATITUDE (NORTH) 0°0'0.00"	LONGITUDE (WEST) 0°0'0.00"	FB FO	ORIENTATION M° (T°)	DISTANCE BETWEEN POINTS (NM)	ALTITUDE / AT / - / B	SPEED LIMIT (KTS)	TRANSITION IDENTIFIER	RUNWAY DIRECTION	NAV PERF
ATANA 2W												
IF		ATANA	06°00'02.0000"	074°49'50.0000"	FB	X	X	18000 +	X	RW31B	31L:31R	RNAV 1
TF		FLOTE	05°22'58.4750"	074°59'47.4110"	FB	202° (195.1°)	38.2	X	X	RW31B	31L:31R	RNAV 1
TF		MQU	05°12'26.0000"	074°55'27.0000"	FB	165° (157.6°)	11.3	17000/FL190 B	X	RW31B	31L:31R	RNAV 1
TF		BO884	05°09'34.6060"	074°50'28.8690"	FB	127° (119.8°)	5.7	17000/18000 B	250	RW31B	31L:31R	RNAV 1
TF		NOR02	05°06'49.7590"	074°45'45.8880"	FB	127° (120.2°)	5.4	17000 AT	X	RW31B	31L:31R	RNAV 1
TF		NOR03	05°14'59.4090"	074°38'02.5990"	FB	050° (043.5°)	11.2	X	X	RW31B	31L:31R	RNAV 1
TF		NOR04	05°18'38.8910"	074°28'17.3580"	FB	076° (069.5°)	10.4	X	X	RW31B	31L:31R	RNAV 1
TF		NOR05	05°17'49.7170"	074°17'54.4050"	FB	101° (094.5°)	10.4	17000 AT	X	RW31B	31L:31R	RNAV 1
TF		PULDI	05°02'27.2430"	074°22'35.8260"	FB	204° (197.0°)	16.0	X	X	RW31B	31L:31R	RNAV 1
TF		AMVES	04°54'45.9900"	074°24'56.4530"	FB	204° (197.0°)	8.0	15000/17000 B	250	RW31B	31L:31R	RNAV 1
EDPUL 2W												
IF		EDPUL	05°16'55.0000"	075°11'14.0000"	FB	X	X	17000 +	X	RW31B	31L:31R	RNAV 1
TF		MQU	05°12'26.0000"	074°55'27.0000"	FB	113° (105.8°)	16.4	17000/FL190 B	X	RW31B	31L:31R	RNAV 1
TF		BO884	05°09'34.6060"	074°50'28.8690"	FB	127° (119.8°)	5.7	17000/18000 B	250	RW31B	31L:31R	RNAV 1
TF		NOR02	05°06'49.7590"	074°45'45.8880"	FB	127° (120.2°)	5.4	17000 AT	X	RW31B	31L:31R	RNAV 1
TF		NOR03	05°14'59.4090"	074°38'02.5990"	FB	050° (043.5°)	11.2	X	X	RW31B	31L:31R	RNAV 1
TF		NOR04	05°18'38.8910"	074°28'17.3580"	FB	076° (069.5°)	10.4	X	X	RW31B	31L:31R	RNAV 1
TF		NOR05	05°17'49.7170"	074°17'54.4050"	FB	101° (094.5°)	10.4	17000 AT	X	RW31B	31L:31R	RNAV 1
TF		PULDI	05°02'27.2430"	074°22'35.8260"	FB	204° (197.0°)	16.0	X	X	RW31B	31L:31R	RNAV 1
TF		AMVES	04°54'45.9900"	074°24'56.4530"	FB	204° (197.0°)	8.0	15000/17000 B	250	RW31B	31L:31R	RNAV 1
ISVAT 2W												
IF		ISVAT	05°41'41.0000"	075°07'30.0000"	FB	X	X	18000 +	X	RW31B	31L:31R	RNAV 1
TF		FLOTE	05°22'58.4750"	074°59'47.4110"	FB	164° (157.6°)	20.1	X	X	RW31B	31L:31R	RNAV 1
TF		MQU	05°12'26.0000"	074°55'27.0000"	FB	165° (157.6°)	11.3	17000/FL190 B	X	RW31B	31L:31R	RNAV 1
TF		BO884	05°09'34.6060"	074°50'28.8690"	FB	127° (119.8°)	5.7	17000/18000 B	250	RW31B	31L:31R	RNAV 1
TF		NOR02	05°06'49.7590"	074°45'45.8880"	FB	127° (120.2°)	5.4	17000 AT	X	RW31B	31L:31R	RNAV 1
TF		NOR03	05°14'59.4090"	074°38'02.5990"	FB	050° (043.5°)	11.2	X	X	RW31B	31L:31R	RNAV 1
TF		NOR04	05°18'38.8910"	074°28'17.3580"	FB	076° (069.5°)	10.4	X	X	RW31B	31L:31R	RNAV 1
TF		NOR05	05°17'49.7170"	074°17'54.4050"	FB	101° (094.5°)	10.4	17000 AT	X	RW31B	31L:31R	RNAV 1
TF		PULDI	05°02'27.2430"	074°22'35.8260"	FB	204° (197.0°)	16.0	X	X	RW31B	31L:31R	RNAV 1
TF		AMVES	04°54'45.9900"	074°24'56.4530"	FB	204° (197.0°)	8.0	15000/17000 B	250	RW31B	31L:31R	RNAV 1
MORMO 2W												
IF		MORMO	03°52'08.0000"	074°51'04.0000"	FB	X	X	FL210 +	X	RW31B	31L:31R	RNAV 1
TF		GIR	04°11'30.0000"	074°51'57.0000"	FB	004° (357.4°)	19.3	X	X	RW31B	31L:31R	RNAV 1
TF		GERBA	04°26'11.6440"	074°50'00.7610"	FB	014° (007.5°)	14.8	FL210 +	X	RW31B	31L:31R	RNAV 1
TF		IRUPU	04°46'07.0560"	074°47'23.0280"	FB	014° (007.5°)	20.0	17000 AT	250	RW31B	31L:31R	RNAV 1
TF		NOR01	04°56'51.6730"	074°48'53.7220"	FB	359° (352.0°)	10.8	X	X	RW31B	31L:31R	RNAV 1
TF		NOR02	05°06'49.7590"	074°45'45.8880"	FB	024° (017.5°)	10.4	X	X	RW31B	31L:31R	RNAV 1
TF		NOR03	05°14'59.4090"	074°38'02.5990"	FB	050° (043.5°)	11.2	X	X	RW31B	31L:31R	RNAV 1
TF		NOR04	05°18'38.8910"	074°28'17.3580"	FB	076° (069.5°)	10.4	X	X	RW31B	31L:31R	RNAV 1
TF		NOR05	05°17'49.7170"	074°17'54.4050"	FB	101° (094.5°)	10.4	17000 AT	X	RW31B	31L:31R	RNAV 1
TF		PULDI	05°02'27.2430"	074°22'35.8260"	FB	204° (197.0°)	16.0	X	X	RW31B	31L:31R	RNAV 1
TF		AMVES	04°54'45.9900"	074°24'56.4530"	FB	204° (197.0°)	8.0	15000/17000 B	250	RW31B	31L:31R	RNAV 1

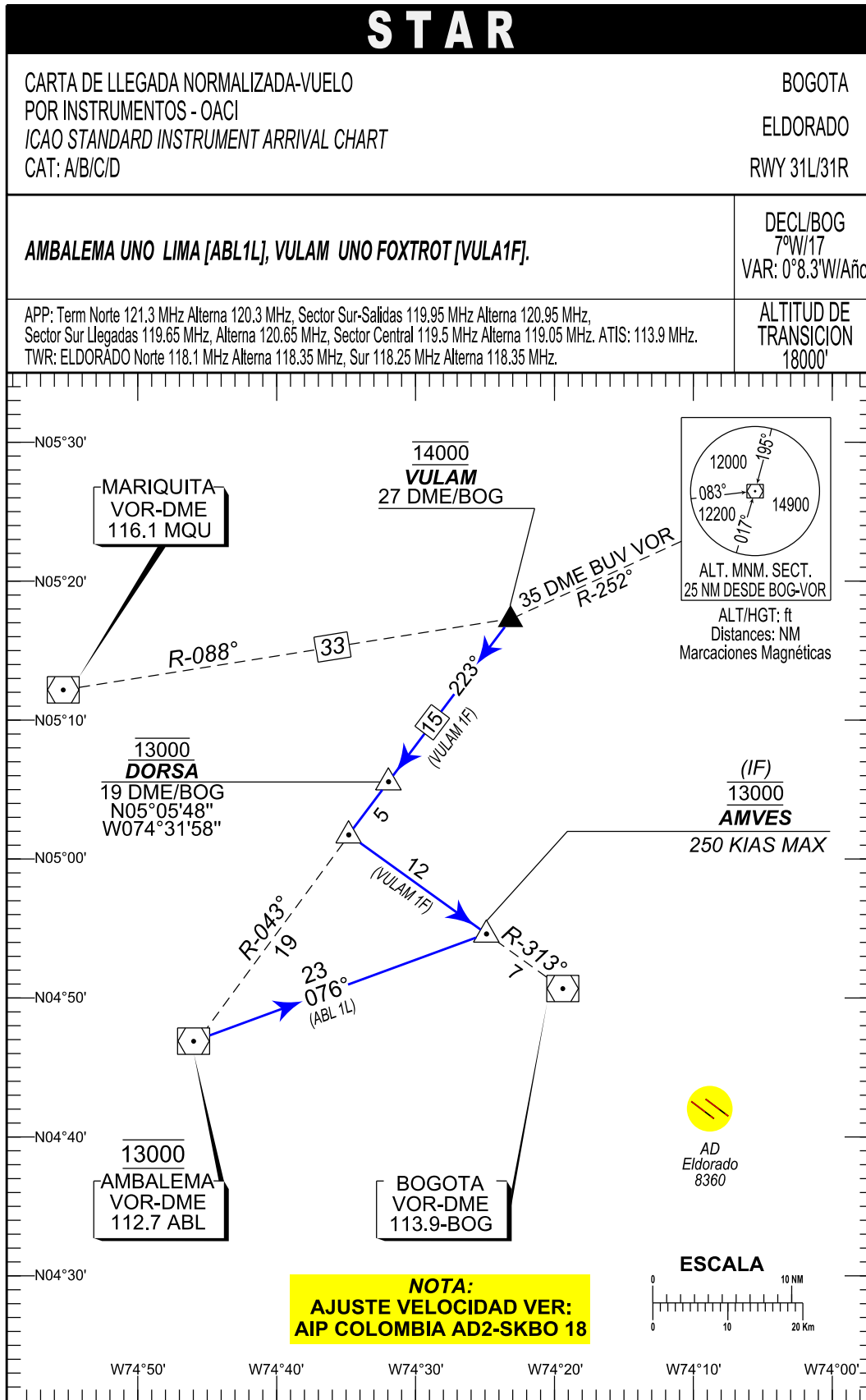
BOGOTA / ELDORADO
SKBO / STAR2 RNAV RWY 31L / 31R

PATH TERM	WAYPOINT NAME	LATITUDE (NORTH) 0°0'0.00"	LONGITUDE (WEST) 0°0'0.00"	FB FO	ORIENTATION M° (T°)	DISTANCE BETWEEN POINTS (NM)	ALTITUDE / AT / - / B	SPEED LIMIT (Kts)	TRANSITION IDENTIFIER	RUNWAY DIRECTION	NAV PERF
MUGBU 2W											
IF	MUGBU	03°52'08.0000"	075°10'24.0000"	FB	X	X	FL210 +	X	RW31B	31L;31R	RNAV 1
TF	GIR	04°11'30.0000"	074°51'57.0000"	FB	051° (043.7°)	26.7	X	X	RW31B	31L;31R	RNAV 1
TF	GERBA	04°26'11.6440"	074°50'00.7610"	FB	014° (007.5°)	14.8	FL210 +	X	RW31B	31L;31R	RNAV 1
TF	IRUPU	04°46'07.0560"	074°47'23.0280"	FB	014° (007.5°)	20.0	17000 AT	250	RW31B	31L;31R	RNAV 1
TF	NOR01	04°56'51.6730"	074°48'53.7220"	FB	359° (352.0°)	10.8	X	X	RW31B	31L;31R	RNAV 1
TF	NOR02	05°06'49.7590"	074°45'45.8880"	FB	024° (017.5°)	10.4	X	X	RW31B	31L;31R	RNAV 1
TF	NOR03	05°14'59.4090"	074°38'02.5990"	FB	050° (043.5°)	11.2	X	X	RW31B	31L;31R	RNAV 1
TF	NOR04	05°18'38.8910"	074°28'17.3580"	FB	076° (069.5°)	10.4	X	X	RW31B	31L;31R	RNAV 1
TF	NOR05	05°17'49.7170"	074°17'54.4050"	FB	101° (094.5°)	10.4	17000 AT	X	RW31B	31L;31R	RNAV 1
TF	PULDI	05°02'27.2430"	074°22'35.8260"	FB	204° (197.0°)	16.0	X	X	RW31B	31L;31R	RNAV 1
TF	AMVES	04°54'45.9900"	074°24'56.4530"	FB	204° (197.0°)	8.0	15000/17000 B	250	RW31B	31L;31R	RNAV 1
TIRTO 2W											
IF	TIRTO	05°08'09.0000"	075°29'31.0000"	FB	X	X	FL250 +	X	RW31B	31L;31R	RNAV 1
TF	BITED	04°53'18.9320"	075°06'05.3720"	FB	129° (122.3°)	27.7	FL220 +	X	RW31B	31L;31R	RNAV 1
TF	IRUPU	04°46'07.0560"	074°47'23.0280"	FB	118° (111.0°)	20.0	17000 AT	250	RW31B	31L;31R	RNAV 1
TF	NOR01	04°56'51.6730"	074°48'53.7220"	FB	359° (352.0°)	10.8	X	X	RW31B	31L;31R	RNAV 1
TF	NOR02	05°06'49.7590"	074°45'45.8880"	FB	024° (017.5°)	10.4	X	X	RW31B	31L;31R	RNAV 1
TF	NOR03	05°14'59.4090"	074°38'02.5990"	FB	050° (043.5°)	11.2	X	X	RW31B	31L;31R	RNAV 1
TF	NOR04	05°18'38.8910"	074°28'17.3580"	FB	076° (069.5°)	10.4	X	X	RW31B	31L;31R	RNAV 1
TF	NOR05	05°17'49.7170"	074°17'54.4050"	FB	101° (094.5°)	10.4	17000 AT	X	RW31B	31L;31R	RNAV 1
TF	PULDI	05°02'27.2430"	074°22'35.8260"	FB	204° (197.0°)	16.0	X	X	RW31B	31L;31R	RNAV 1
TF	AMVES	04°54'45.9900"	074°24'56.4530"	FB	204° (197.0°)	8.0	15000/17000 B	250	RW31B	31L;31R	RNAV 1
TOLIM 2W											
IF	TOLIM	04°22'33.0000"	075°29'48.0000"	FB	X	X	FL190 +	X	RW31B	31L;31R	RNAV 1
TF	BO862	04°36'23.2530"	075°04'54.6260"	FB	068° (061.0°)	28.4	FL190 +	X	RW31B	31L;31R	RNAV 1
TF	IRUPU	04°46'07.0560"	074°47'23.0280"	FB	068° (061.0°)	20.0	17000 AT	250	RW31B	31L;31R	RNAV 1
TF	NOR01	04°56'51.6730"	074°48'53.7220"	FB	359° (352.0°)	10.8	X	X	RW31B	31L;31R	RNAV 1
TF	NOR02	05°06'49.7590"	074°45'45.8880"	FB	024° (017.5°)	10.4	X	X	RW31B	31L;31R	RNAV 1
TF	NOR03	05°14'59.4090"	074°38'02.5990"	FB	050° (043.5°)	11.2	X	X	RW31B	31L;31R	RNAV 1
TF	NOR04	05°18'38.8910"	074°28'17.3580"	FB	076° (069.5°)	10.4	X	X	RW31B	31L;31R	RNAV 1
TF	NOR05	05°17'49.7170"	074°17'54.4050"	FB	101° (094.5°)	10.4	17000 AT	X	RW31B	31L;31R	RNAV 1
TF	PULDI	05°02'27.2430"	074°22'35.8260"	FB	204° (197.0°)	16.0	X	X	RW31B	31L;31R	RNAV 1
TF	AMVES	04°54'45.9900"	074°24'56.4530"	FB	204° (197.0°)	8.0	15000/17000 B	250	RW31B	31L;31R	RNAV 1
USANA 2W											
IF	USANA	03°52'08.0000"	074°58'38.0000"	FB	X	X	FL210 +	X	RW31B	31L;31R	RNAV 1
TF	GIR	04°11'30.0000"	074°51'57.0000"	FB	026° (019.1°)	20.4	X	X	RW31B	31L;31R	RNAV 1
TF	GERBA	04°26'11.6440"	074°50'00.7610"	FB	014° (007.5°)	14.8	FL210 +	X	RW31B	31L;31R	RNAV 1
TF	IRUPU	04°46'07.0560"	074°47'23.0280"	FB	014° (007.5°)	20.0	17000 AT	250	RW31B	31L;31R	RNAV 1
TF	NOR01	04°56'51.6730"	074°48'53.7220"	FB	359° (352.0°)	10.8	X	X	RW31B	31L;31R	RNAV 1
TF	NOR02	05°06'49.7590"	074°45'45.8880"	FB	024° (017.5°)	10.4	X	X	RW31B	31L;31R	RNAV 1
TF	NOR03	05°14'59.4090"	074°38'02.5990"	FB	050° (043.5°)	11.2	X	X	RW31B	31L;31R	RNAV 1
TF	NOR04	05°18'38.8910"	074°28'17.3580"	FB	076° (069.5°)	10.4	X	X	RW31B	31L;31R	RNAV 1
TF	NOR05	05°17'49.7170"	074°17'54.4050"	FB	101° (094.5°)	10.4	17000 AT	X	RW31B	31L;31R	RNAV 1
TF	PULDI	05°02'27.2430"	074°22'35.8260"	FB	204° (197.0°)	16.0	X	X	RW31B	31L;31R	RNAV 1
TF	AMVES	04°54'45.9900"	074°24'56.4530"	FB	204° (197.0°)	8.0	15000/17000 B	250	RW31B	31L;31R	RNAV 1

PAGINA
DEJADA
INTENCIONALMENTE
EN BLANCO







PAGINA
DEJADA
INTENCIONALMENTE
EN BLANCO