

SID

CARTA DE SALIDA NORMALIZADA-VUELO
POR INSTRUMENTOS - OACI
ICAO STANDARD INSTRUMENT DEPARTURE CHART

CAREPA
ANTONIO ROLDAN
CAT: A/B/C
RWY 33

KUBEK UNO CHARLIE [KUBE1C].

ACC: MEDELLIN Control 127.2 MHz. Frecuencia Alternativa Medellin APP Norte 126.1 MHz.
TWR: ANTONIO ROLDAN Torre/Tower 118.7 MHz.

DECL/LCE
5°41'W/15
VAR 0°8'.0W/Año

ALTITUD DE TRANSICION
18000'

MANTENER PDG MINIMO 5.1%
HASTA ALCANZAR MEA

180°

270°

360°

3100

8600

7700

ALT.MNM.SECT.
25 NM DESDE LCE-VOR

ALT/HGT : ft
Distances : NM
Marcaciones Magnéticas

N08°20'

N08°10'

N08°00'

N07°50'

N07°40'

N07°30'

11000
KUBEK

B-510
(KUBEK 1C)

4700

10 DME

336°

R-298°

3100

AD
Antonio Roldan B.
52

LOS CEDROS
VOR-DME
112.6 - LCE

N07°49'04.427"
W076°43'18.956"

ESCALA

0 10 20 NM
0 10 20 Km

W77°10'

W77°00'

W76°50'

W76°40'

Gr. (%)

KTS

90

110

130

150

180

PDG

5.1

ft/min

470

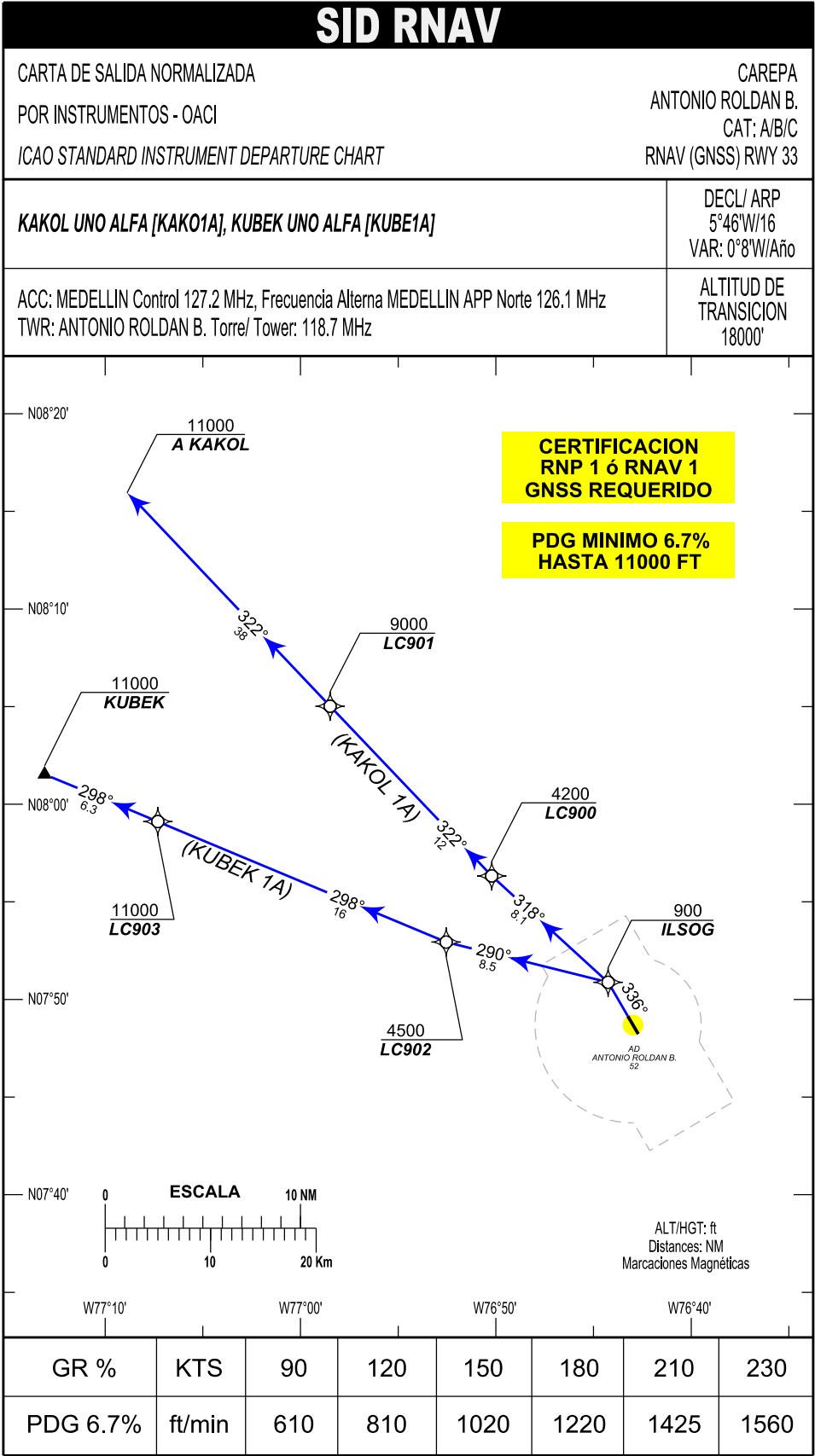
570

680

780

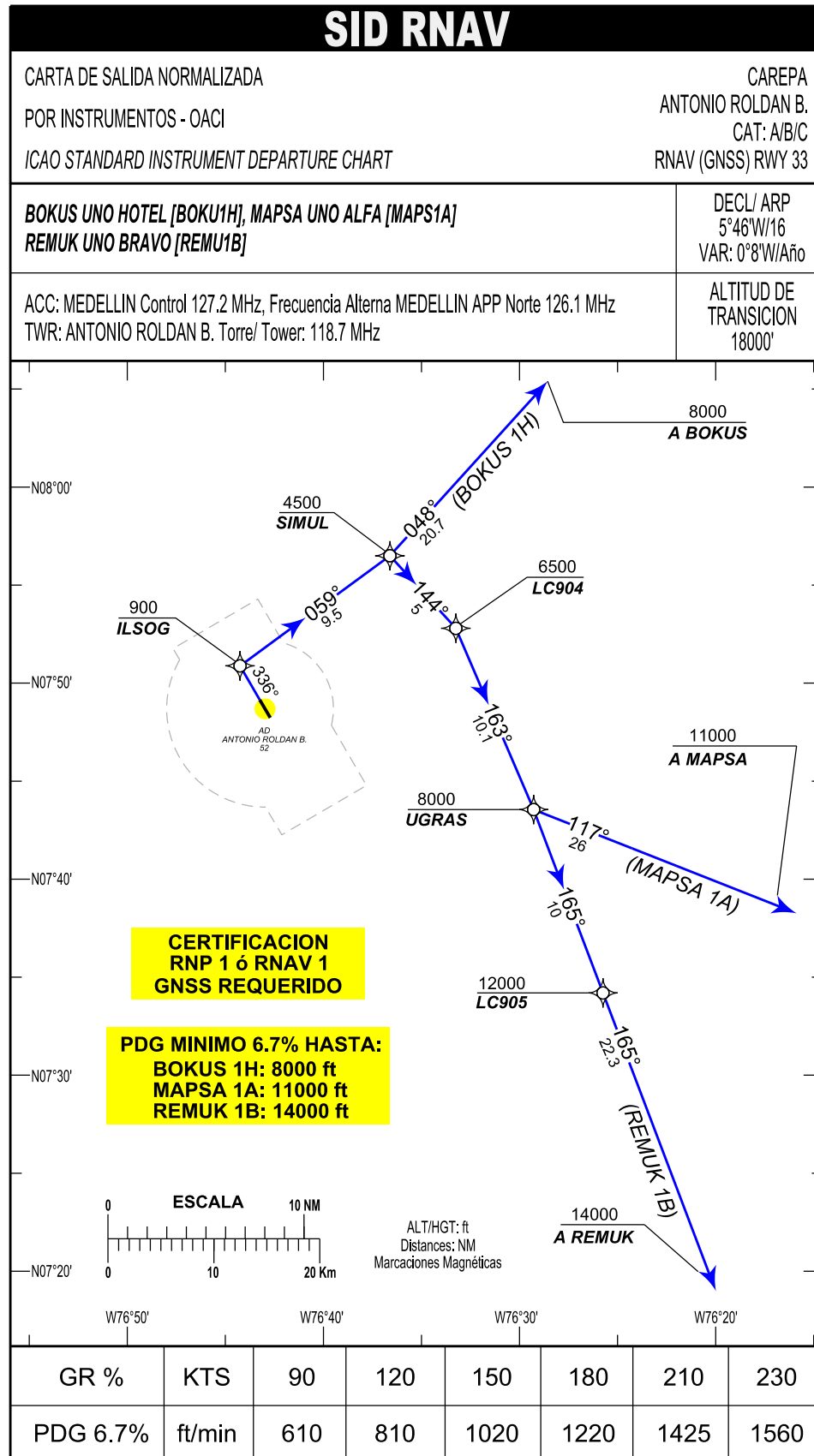
930

PAGINA
DEJADA
INTENCIONALMENTE
EN BLANCO



CAREPA / LOS CEDROS
SKLC/ SID4 RNAV (GNSS) RWY 33

PATH TERM	NOMBRE PUNTO DE RECORRIDO	LATITUD (NORTE) 0°0'0.00"	LONGITUD (WISKEY) 0°0'0.00"	FB FO	RUMBO M°(T°)	DISTANCIA ENTRE PUNTOS (NM)	DIRECCION DEL VIRAJE	ALTITUD	LIMITE DE VELOCIDAD (Kts)	PDG %	PERFORM DE NAV
KAKOL 1A											
CF	ILSOG	N07°50'52.75"	W076°44'15.23"	FB	336° (329.8°T)	X	X	900+	X	6.7%	RNP1 O RNAV1
TF	LC900	N07°56'19.62"	W076°50'12.64"	FB	318° (312.4°T)	8.1	X	4200*	X	6.7%	RNP1 O RNAV1
TF	LC901	N08°05'1.17"	W076°58'29.01"	FB	322° (316.4°T)	12	X	9000+	X	6.7%	RNP1 O RNAV1
TF	KAKOL	N08°32'32"	W077°24'42"	FB	322° (316.4°T)	38	X	11000+	X	6.7%	RNP1 O RNAV1
KUBEK 1A											
CF	ILSOG	N07°50'52.75"	W076°44'15.23"	FB	336° (329.8°T)	X	X	900+	X	6.7%	RNP1 O RNAV1
TF	LC902	N07°52'56.43"	W076°52'32.55"	FB	290° (283.9°T)	8.5	X	4500+	X	6.7%	RNP1 O RNAV1
TF	LC903	N07°59'6.63"	W077°07'18.3"	FB	298° (292.4°T)	16	X	11000+	X	6.7%	RNP1 O RNAV1
TF	KUBEK	N08°01'32"	W077°13'06"	FB	298° (292.4°T)	6.3	X	11000+	X	3.3%	RNP1 O RNAV1



CAREPA / LOS CEDROS
SKLC/ SID5 RNAV (GNSS) RWY 33

PATH TERM	NOMBRE PUNTO DE RECORRIDO	LATITUD (NORTE) 0° 0'0.00"	LONGITUD (WISKEY) 0° 0'0.00"	FB FO	RUMBO M°(T°)	DISTANCIA ENTRE PUNTOS (NM)	DIRECCION DEL VIRAJE	ALTITUD	LIMITE DE VELOCIDAD (KTS)	PDG %	PERFORM DE NAV
BOKUS 1H											
CF	ILSOG	N07°50'52.75"	W076°44'15.23"	FB	336° (329.8°T)	X	X	900+	X	6.7%	RNP1 O RNAV1
TF	SIMUL	N07°56'29.79"	W076°36'36.55"	FB	059° (053.7°T)	9.5	X	4500*	X	6.7%	RNP1 O RNAV1
TF	BOKUS	N08°11'51"	W076°22'43"	FB	048° (042.1°T)	20.7	X	8000+	X	6.7%	RNP1 O RNAV1
MAPSA 1A											
CF	ILSOG	N07°50'52.75"	W076°44'15.23"	FB	336° (329.8°T)	X	X	900+	X	6.7%	RNP1 O RNAV1
TF	SIMUL	N07°56'29.79"	W076°36'36.55"	FB	059° (053.7°T)	9.5	X	4500*	X	6.7%	RNP1 O RNAV1
TF	LC904	N07°52'47.78"	W076°33'14.79"	FB	144° (137.8°T)	5	X	6500+	X	6.7%	RNP1 O RNAV1
TF	UGRAS	N07°43'32.93"	W076°29'16.79"	FB	163° (156.8°T)	10.1	X	8000+	X	6.7%	RNP1 O RNAV1
TF	MAPSA	N07°33'56"	W076°04'54"	FB	117° (111.5°T)	26.2	X	11000+	X	6.7%	RNP1 O RNAV1
REMUK 1B											
CF	ILSOG	N07°50'52.75"	W076°44'15.23"	FB	336° (329.8°T)	X	X	900+	X	6.7%	RNP1 O RNAV1
TF	SIMUL	N07°56'29.79"	W076°36'36.55"	FB	059° (053.7°T)	9.5	X	4500*	X	6.7%	RNP1 O RNAV1
TF	LC904	N07°52'47.78"	W076°33'14.79"	FB	144° (137.8°T)	5	X	6500+	X	6.7%	RNP1 O RNAV1
TF	UGRAS	N07°43'32.93"	W076°29'16.79"	FB	163° (156.8°T)	10.1	X	8000+	X	6.7%	RNP1 O RNAV1
TF	LC905	N07°34'11.7"	W076°25'44.61"	FB	165° (159.3°T)	10	X	12000+	X	6.7%	RNP1 O RNAV1
TF	REMUK	N07°13'19"	W076°17'51"	FB	165° (159.3°T)	22.3	X	14000+	X	6.7%	RNP1 O RNAV1

ALTITUD DE
TRANSICION
18000'



CAREPA / LOS CEDROS
SKLC/ SID6 RNAV (GNSS) RWY 33

PATH TERM	NOMBRE PUNTO DE RECORRIDO	LATITUD (NORTE) 0°10'0.00"	LONGITUD (WISKEY) 0°10'0.00"	FB FO	RUMBO M°(T°)	DISTANCIA ENTRE PUNTOS (NM)	DIRECCION DEL VIRAJE	ALTITUD	LIMITE DE VELOCIDAD (Kts)	PDG %	PERFORM DE NAV
REMUK 1C											
CF	ILSOG	N07°50'52.75"	W076°44'15.23"	FB	336° (329.8°T)	X	X	800+	X	6.5%	RNP1 O RNAV1
TF	DOKMI	N07°47'51.71"	W076°49'26.2"	FB	246° (239.8°T)	6	X	3000+	X	6.5%	RNP1 O RNAV1
TF	IRIPA	N07°36'34.15"	W076°42'51.87"	FB	156° (149.8°T)	13.1	X	8000+	X	6.5%	RNP1 O RNAV1
TF	LC907	N07°29'45.83"	W076°35'32.24"	FB	139° (132.9°T)	10	X	12000+	X	6.5%	RNP1 O RNAV1
TF	REMUK	N07°13'19"	W076°17'51"	FB	139° (132.9°T)	24.2	X	14000+	X	6.5%	RNP1 O RNAV1
ISRAP 1E											
CF	ILSOG	N07°50'52.75"	W076°44'15.23"	FB	336° (329.8°T)	X	X	800+	X	6.5%	RNP1 O RNAV1
TF	DOKMI	N07°47'51.71"	W076°49'26.2"	FB	246° (239.8°T)	6	X	3000+	X	6.5%	RNP1 O RNAV1
TF	IRIPA	N07°36'34.15"	W076°42'51.87"	FB	156° (149.8°T)	13.1	X	8000+	X	6.5%	RNP1 O RNAV1
TF	LC906	N07°13'2.94"	W076°41'57.07"	FB	184° (177.8°T)	23.5	X	12000+	X	6.5%	RNP1 O RNAV1
TF	ISRAP	N06°50'49"	W076°41'06"	FB	184° (177.8°T)	22.2	X	12000+	X	3.3%	RNP1 O RNAV1

SID

CARTA DE SALIDA NORMALIZADA-VUELO
POR INSTRUMENTOS - OACI
ICAO STANDARD INSTRUMENT DEPARTURE CHART

CAREPA
ANTONIO ROLDAN
CAT: A/B/C
RWY 15

MAPSA DOS DELTA [MAPS2D], REMUK UNO HOTEL [REMU1H]

DECL/LCE
5°41'W/15
VAR 0°8'.0W/Año

ACC: MEDELLIN Control 127.2 MHz. Frecuencia Alternativa Medellín APP Norte 126.1 MHz.
TWR: ANTONIO ROLDAN Torre/Tower 118.7 MHz.

ALTITUD DE TRANSICION
1800'

N08°00'

AD Antonio Roldan B. 52

LOS CEDROS VOR-DME 112.6 - LCE N07°49'04.427" W076°43'18.956"

MANTENER PDG MINIMO 6.5% HASTA ALCANZAR MEA

3500
10 DME

5800
10 DME

6100
17 DME

7900
15 DME

9900
26 DME

11000
A MAPSA
(B-510 MAPSA 2D)

14000
REMUK
(B-689 REMUK 1H)

N07°50'

N07°30'

N07°20'

N07°10'

ESCALA
0 10 NM
0 10 20 Km

W76°50' W76°40' W76°30' W76°20'

Gr. (%)
PDG 6.5

KTS
ft/min

90
600

110
730

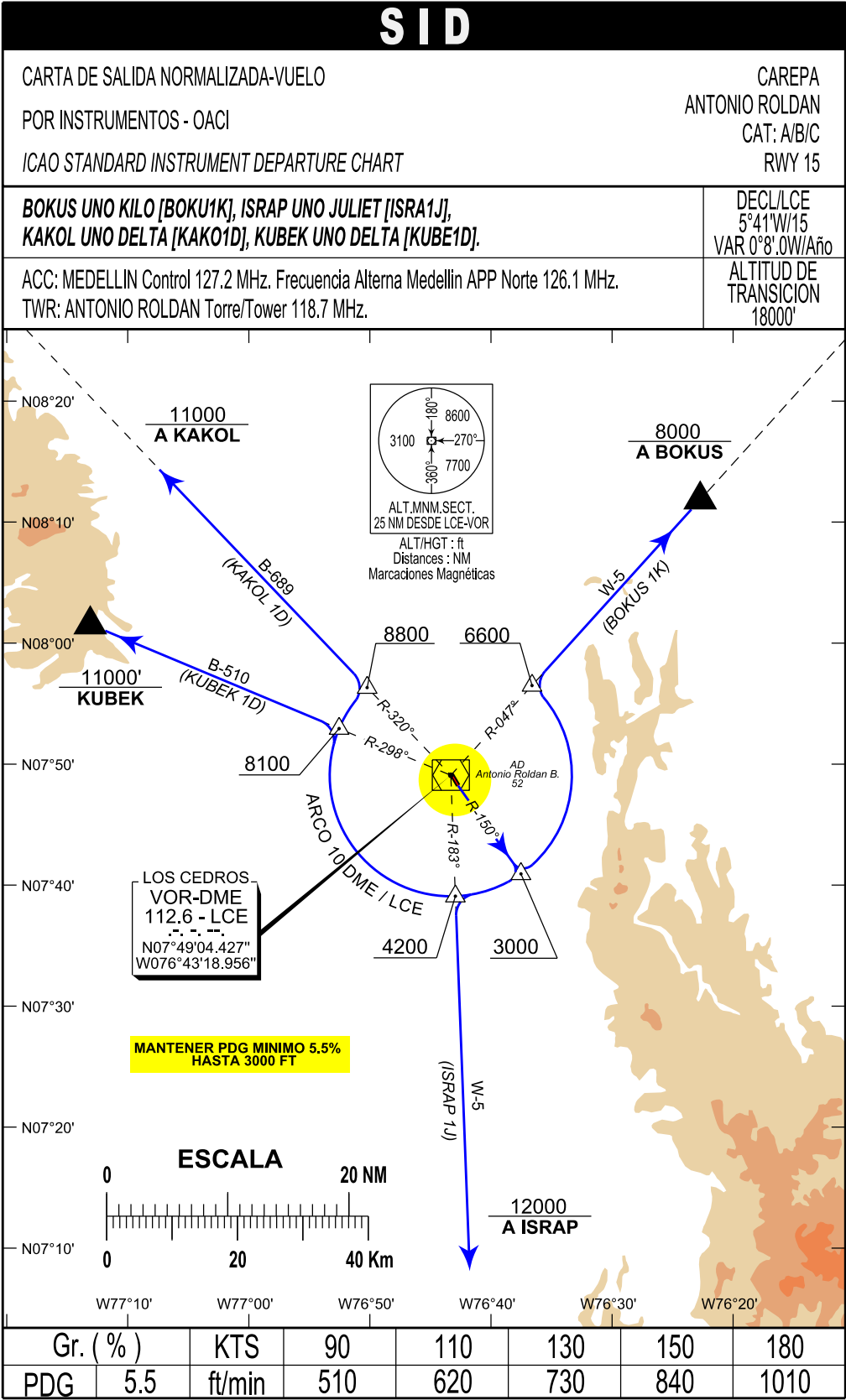
130
860

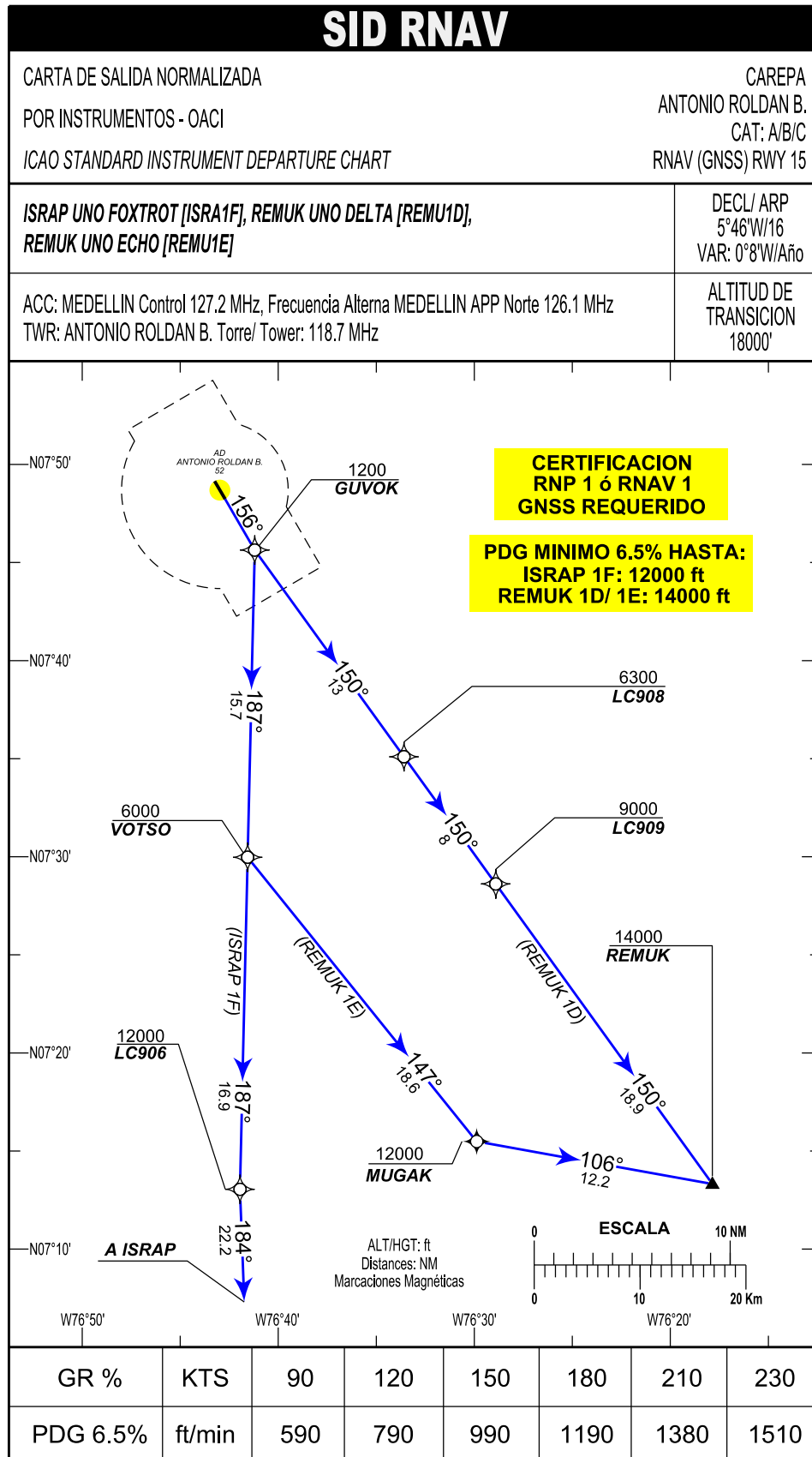
150
990

180
1190

ALT.MNM.SECT.
25 NM DESDE LCE-VOR
ALT/HGT : ft
Distances : NM
Marcaciones Magnéticas

3100
8600
270°
360°
7700





CAREPA / LOS CEDROS
SKLC/ SID9 RNAV (GNSS) RWY 15

PATH TERM	NOMBRE PUNTO DE RECORRIDO	LATITUD (NORTE) 0°0'0.00"	LONGITUD (WISKEY) 0°0'0.00"	FB FO	RUMBO M°(T°)	DISTANCIA ENTRE PUNTOS (NM)	DIRECCION DEL VIRAJE	ALTITUD	LIMITE DE VELOCIDAD (KTS)	PDG %	PERFORM DE NAV
REMUK 1D											
CF	GUVOK	N07°45'38.24"	W076°41'12.06"	FB	156°(149.8°T)	X	X	1200+	X	6.5%	RNP1 O RNAV1
TF	LC908	N07°35'5.99"	W076°33'35.27"	FB	150°(144.2°T)	13	X	6300+	X	6.5%	RNP1 O RNAV1
TF	LC909	N07°28'36.9"	W076°28'54.17"	FB	150°(144.2°T)	8	X	9000+	X	6.5%	RNP1 O RNAV1
TF	REMUK	N07°13'19"	W076°17'51"	FB	150°(144.2°T)	18.9	X	14000+	X	6.5%	RNP1 O RNAV1
REMUK 1E											
CF	GUVOK	N07°45'38.24"	W076°41'12.06"	FB	156°(149.8°T)	X	X	1200+	X	6.5%	RNP1 O RNAV1
TF	VOTSO	N07°29'58.53"	W076°41'33.69"	FB	187°(181.3°T)	15.7	X	6000+	X	6.5%	RNP1 O RNAV1
TF	MUGAK	N07°15'29.14"	W076°29'52.59"	FB	147°(141.1°T)	18.6	X	12000+	X	6.5%	RNP1 O RNAV1
TF	REMUK	N07°13'19"	W076°17'51"	FB	106°(100.2°)	12.2	X	14000+	X	6.5%	RNP1 O RNAV1
ISRAP 1F											
CF	GUVOK	N07°45'38.24"	W076°41'12.06"	FB	156°(149.8°T)	X	X	1200+	X	6.5%	RNP1 O RNAV1
TF	VOTSO	N07°29'58.53"	W076°41'33.69"	FB	187°(181.3°T)	15.7	X	6000+	X	6.5%	RNP1 O RNAV1
TF	LC906	N07°13'2.94"	W076°41'57.07"	FB	187°(181.3°T)	16.9	X	12000+	X	6.5%	RNP1 O RNAV1
TF	ISRAP	N06°50'49"	W076°41'06"	FB	184°(177.8°T)	22.2	X	12000+	X	3.3%	RNP1 O RNAV1